

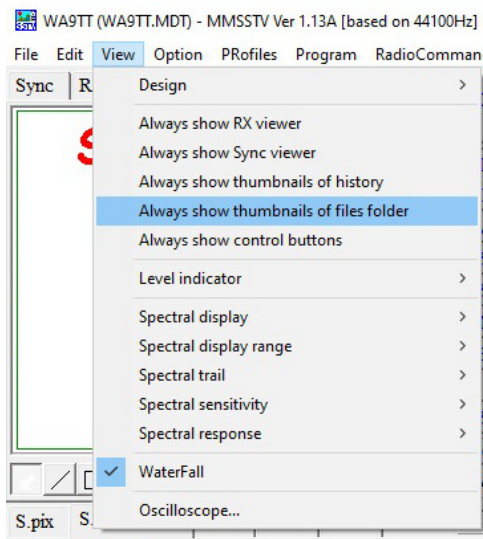
## Embedding a Picture into the Template

Sometimes one wants to use a picture as the permanent background for a template. In these situations, the customary image selection and template overlay process is not used. Instead, one just clicks on the template and it is complete. You are now ready to transmit.

First, create your base template with text as one normally does. Then drag and drop into the S. templates retention area, eg, template #49.

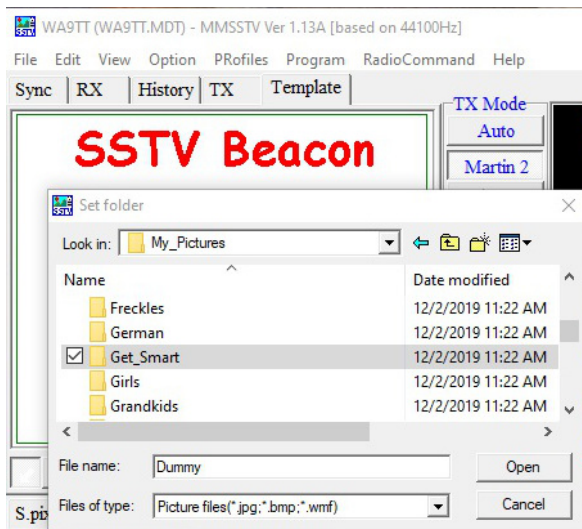


Next you need to open up a thumbnail view of your picture directory to locate a picture you want to embed into your template.

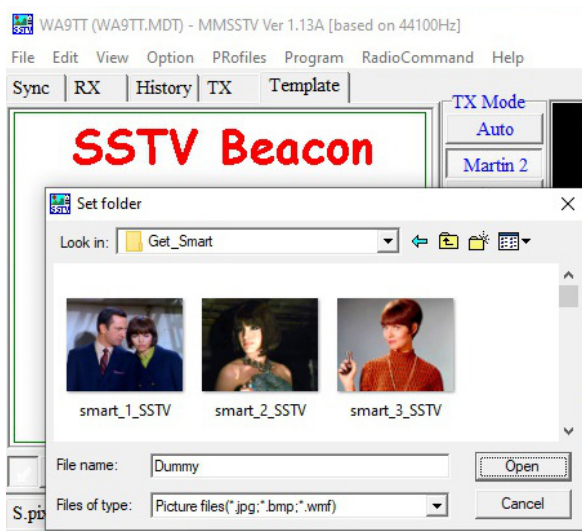


May 13, 2021

This will open up a dialog box. I have a My\_Pictures sub-directory set up within MMSSTV in my C drive. Within there are about 100 different picture themes. Each theme could have 10 to 100 pictures. I am going to use the Get Smart collection!



I highlight Get\_Smart and click to open and another dialog box opens. I want to use it, so click Open.

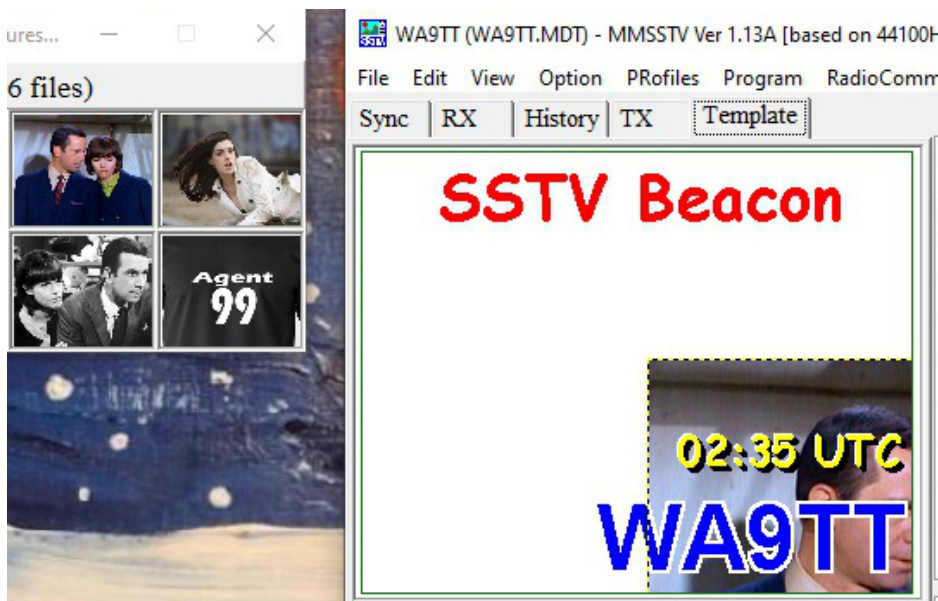


May 13, 2021

A group of pictures from Get Smart appears on my desktop. You can size as desired. Here I have a 2 row, 4 column format. This is my standard layout for selecting pictures when I normally pick one to insert within a template. In this case, the picture selected will be embedded in the template and no background picture will ever appear.



Now I am ready to drag one picture from the thumbnail collection and drop into the middle of the partially finished template screen.

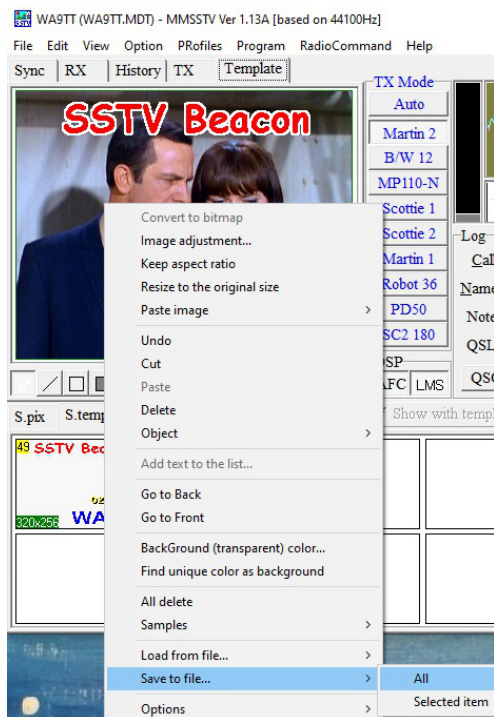


Next place your mouse cursor over that picture and drag until the picture covers the entire template. Position as desired. You are almost done.



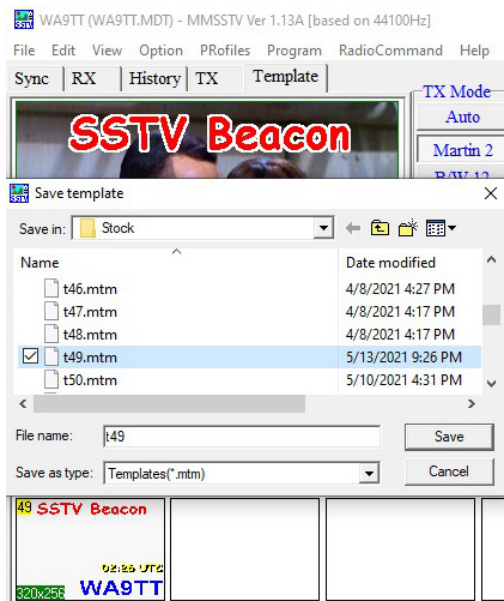
Now come the time when you save to the template storage area and overwrite the partially completed template #49. If you try the normal drag & drop approach, all you will end up doing is moving your newly embedded full picture within your template draft.

So a different technique is needed. Place the mouse cursor over the template draft & right click. From that dialog box select Save to file...All.

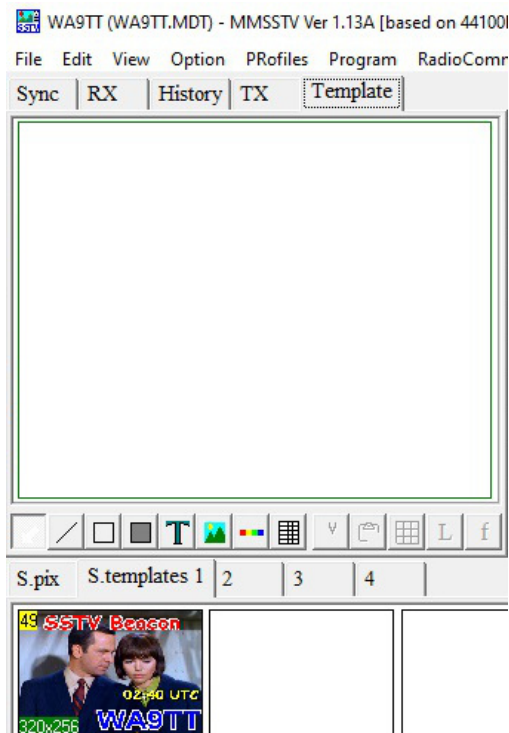


May 13, 2021

Next a dialog box appears. You will need to scroll down to find t49.mtm, highlight and Save.



It will not appear right away in your template storage area, so simply toggle to a different template set and then toggle back to this set of S. templates and your newly completed template will appear.



Congratulations. You've learned some new MMSSTV skills!

Larry WA9TT

May 13, 2021