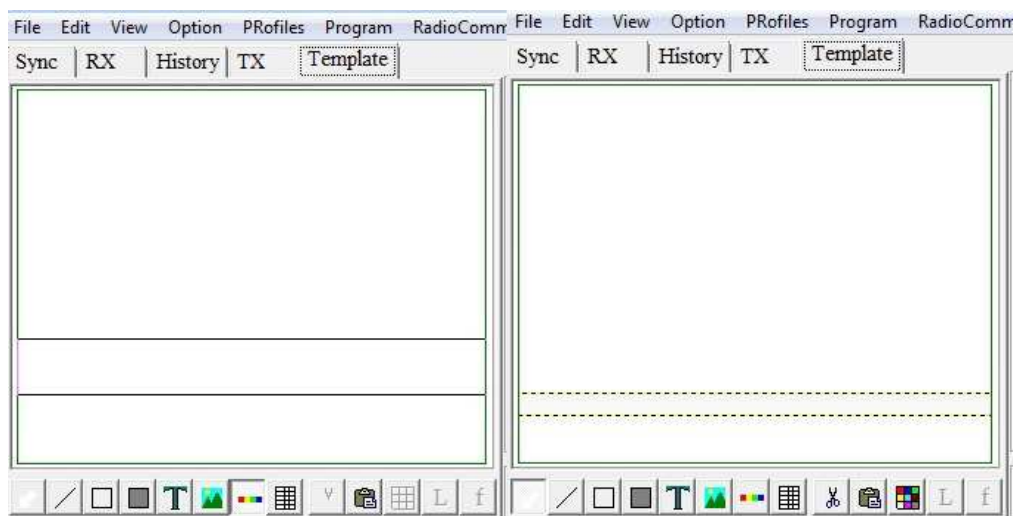


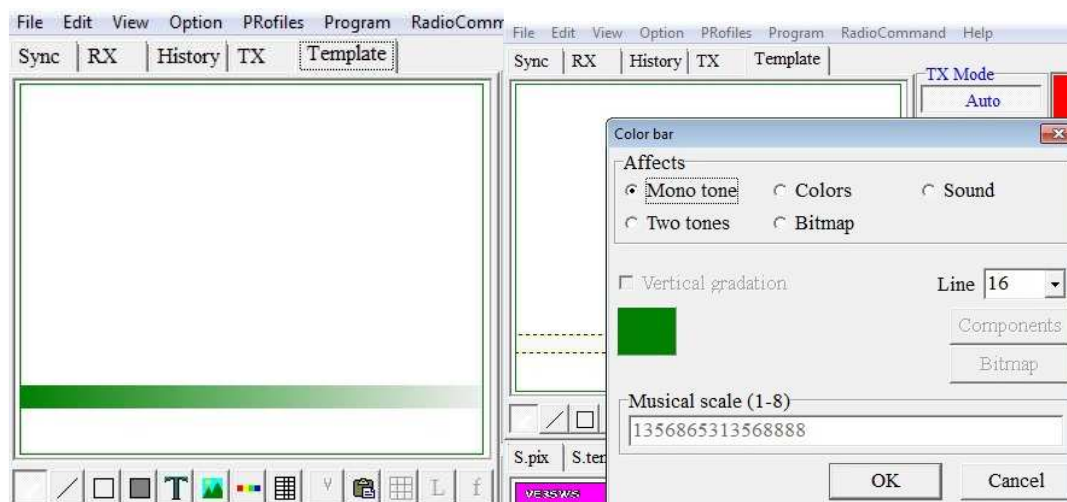
## Creating a Color Bar in Your Template

You may wish to 'spice up' your template with an attractive color bar. Let's discover a way to do this. I have created one for a 73 template which provides an automated QSL for transmission. This is automated because the call sign, date, time, signal report and frequency are all pieces of information that come from the MMSSTV log. You simply use Macros in the template text editor for these variables.

Step 1 is to go to the Template pane in MMSSTV. You should click on the four-color 'Draw Color bar' at the bottom. Then place your cursor over the window, do a left mouse click, drag a bit & then release. You will then get a rectangle as you see in the right panel. Pretty exciting, so far: like watching paint dry!

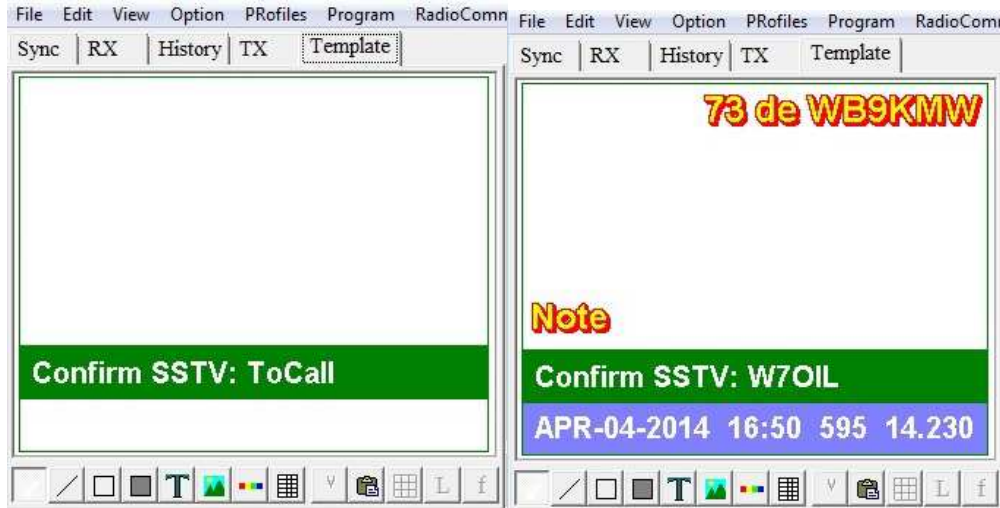


Next place your cursor somewhere AWAY from that rectangle and click with your left mouse key. Now you'll get a gradient color band. Sure, you can leave it this way, but maybe you want a solid color...maybe even a different color. So now double-click on the gradient band. This will bring up the 'Color bar' dialog box. I made one adjustment: I chose 'Mono tone.'

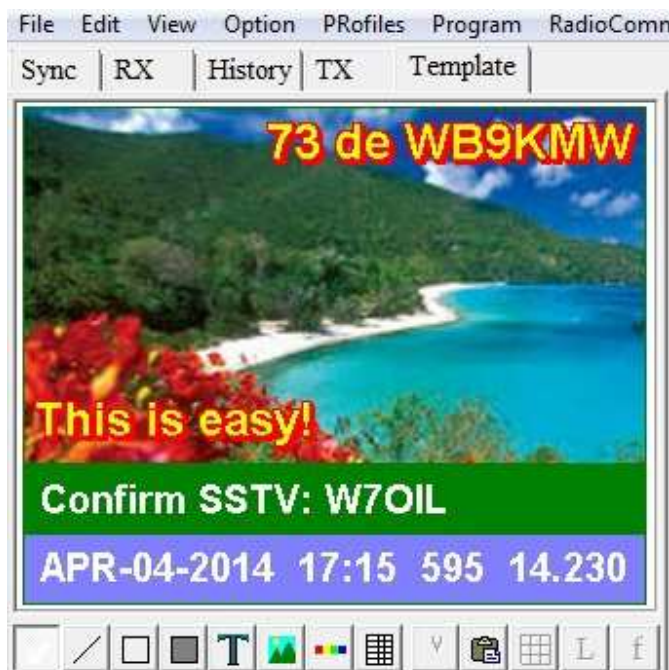


Once you have set a color for the color bar, you may then use the text editor (T). In this example, I chose a white font to contrast with the green background. I used one Macro to automatically insert the station's call sign.

I created a second color bar, and then inserted a multi-stage set of Macros for the date, current UTC time, RSV report and frequency. I also added a Note Macro above and other info to round out my design.



Now I am set to transmit...once I add a desired picture for my background.



Larry WB9KMW @ [www.WB9KMW.com](http://www.WB9KMW.com)